



TRAVELING  
SOFTWARE

CE

# LAPLINK<sup>®</sup>

THE REMOTE ACCESS CHAMPION™

## User's Guide

## **Copyright Notice**

No part of this publication may be reproduced, transmitted, transcribed, stored in a retrieval system, or translated into any human or computer language, in any form or by any means, without the express written permission of Traveling Software, Inc., 18702 North Creek Parkway, Bothell, Washington, 98011, U.S.A.

## **Trademarks**

Traveling Software, the Traveling Software logo, DeskLink, and LapLink are trademarks or registered trademarks of Traveling Software, Inc.

Other brand and product names are trademarks or registered trademarks of their respective holders.

LapLink® CE

© 1999 by Traveling Software, Inc. All rights reserved  
18702 North Creek Parkway  
Bothell, WA 98011 U.S.A.

LapLink® CE User's Guide  
© 1999 Traveling Software, Inc.  
Printed in U.S.A.

MN-LC1000-XX-US

# Contents

## **What is LapLink CE?...4**

## **Requirements...6**

## **Installing and configuring LapLink CE...7**

Installing and starting LapLink CE on your Handheld PC...7

Preparing the host computer for LapLink CE connections...8

## **Connecting to the host computer...10**

Connecting by Direct Modem...11

Connecting by Remote Networking (TCP/IP)...13

Setting up Internet connections...15

## **Changing your view of the host screen...17**

Zooming out to shift your view...18

Zooming out to view more of the host screen...19

Panning to a different view...20

Scrolling...20

Using more of your screen to view the host screen...21

Lowering the resolution of the host screen as you connect...22

## **Sending function keys and other keys to the host computer...23**

Rebooting the host computer...24

Opening the Start menu on the host computer...25

Switching between programs on the host computer...25

## **Copying text from the host computer...26**

## **Ensuring privacy at the host computer...27**

## **Customizing LapLink CE to improve performance...28**

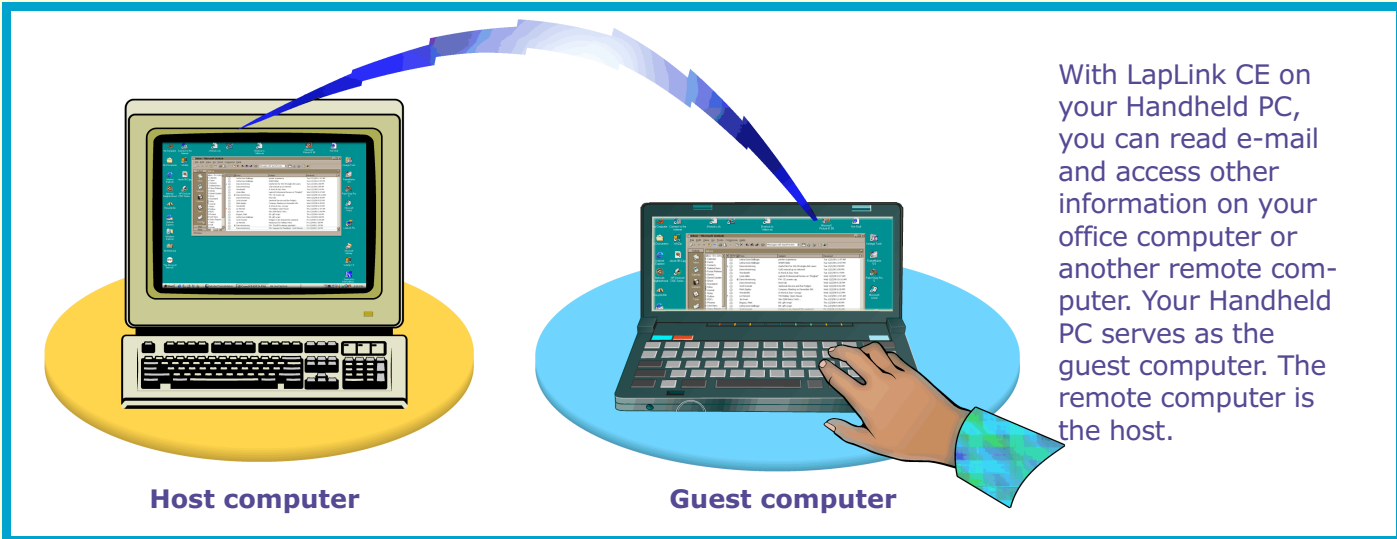
## **Getting help...30**

## **Troubleshooting tips...31**

## **Index...33**

# What is LapLink CE?

LapLink CE lets you access files and information on a remote computer from your Handheld PC. You can connect to your office computer from home after work hours, access office files when you're on the road, or work on a project from a remote work site.



With LapLink CE on your Handheld PC, you can read e-mail and access other information on your office computer or another remote computer. Your Handheld PC serves as the guest computer. The remote computer is the host.

Using LapLink CE, you can leave your desktop computer behind and access its resources, from your Handheld PC, as though you were still sitting in front of the desktop. This process is called remote control.

**Guest computer** Your Handheld PC is the guest computer. The contents of the other computer appear on the screen of your Handheld PC, in LapLink CE. You can use your keyboard and stylus to operate the other computer. You can run pro-

grams and files on that computer. If someone is working on the other computer, you can both collaborate in the same program by taking turns with the keyboard and mouse or stylus.

**Host computer** Your office or remote computer is the host. It must be running the appropriate desktop version of LapLink (see page 8) and should be accessible by modem or Remote Networking (TCP/IP). You do not need to be at the host computer to connect using LapLink.

✓ Your Windows CE Handheld PC can only be a guest computer; it cannot serve as a host computer to other computers.

### **Access e-mail and e-mail attachments**

LapLink CE allows you to use e-mail as you currently do on your desktop computer. Using the desktop as your host computer, connect to it by modem or Remote Networking, and then open e-mail messages and attachments as you normally do. Connecting directly to your e-mail account provides these advantages:

- \* You can open your Inbox without synchronizing your e-mail folders as you do when working offline.
- \* You have access to e-mail folders that you cannot access if you synchronize from your Handheld PC.
- \* You can open attachments on your host computer without having to convert them to Pocket file formats.
- \* You do not have to set up your Inbox on your Handheld PC for Remote Networking.
- \* You can attach files located on your host computer or network to e-mail messages.

# Requirements

Make sure that your Handheld PC and your host computer meet the minimum requirements for LapLink connections.

## General requirements for Windows CE Handheld PCs

- \* Microsoft Windows CE 2.0 (version 1.0 is not supported)
- \* MIPS or SH3 processor
- \* 8 MB RAM
- \* 1.6 MB disk space free
- \* A built-in modem or a compatible Windows CE modem
- \* Stylus or compatible pointing device

## General requirements for the host computer

- \* Desktop or laptop computer running LapLink for Windows 95, LapLink for Windows NT, Remote DeskLink, LapLink Technical, or LapLink Professional
- \* System requirements for version of LapLink installed (see that version's documentation)
- \* Microsoft mouse or compatible pointing device
- \* CD-ROM drive or access to one over a network

## Requirements for Direct Modem connections

- \* The Handheld PC must have a built-in modem supplied by the Handheld PC manufacturer or a compatible Windows CE modem.
- \* The host computer must have a modem that meets the requirements for the installed version of LapLink.

## Requirements for Remote Networking (TCP/IP) connections

- \* The Handheld PC must have a built-in modem supplied by the Handheld PC manufacturer or a compatible Windows CE modem.
- \* The Handheld PC must also have a working Remote Networking connection to the host computer.
- \* The host computer must be accessible through a dial-up server that supports incoming Remote Networking connections. Such servers include Novell NetWare Connect, Shiva NetModem, and Windows NT Remote Access Server.

## Requirements for Internet connections

- \* The Handheld PC must have an Internet (ISP) account with Remote Networking set up in Windows CE.

# Installing and configuring LapLink CE

From your host computer, install LapLink CE on your Handheld PC. Then configure LapLink on the host so that you can connect to it from your Handheld PC.

## Installing and starting LapLink CE on your Handheld PC

You install LapLink CE by running Setup on the host computer. LapLink CE files are then transferred to the Handheld PC and the program is installed.

### To install LapLink CE:

- 1 Connect your Handheld PC to your host computer using Windows CE Services.
- 2 Do one of the following:
  - ★ If you downloaded LapLink CE from the Internet to your host computer, double-click the downloaded file.

- ★ If you received LapLink CE on a CD-ROM disk, insert the disk. Then open Windows Explorer and double-click Setup.exe on the CD-ROM drive.

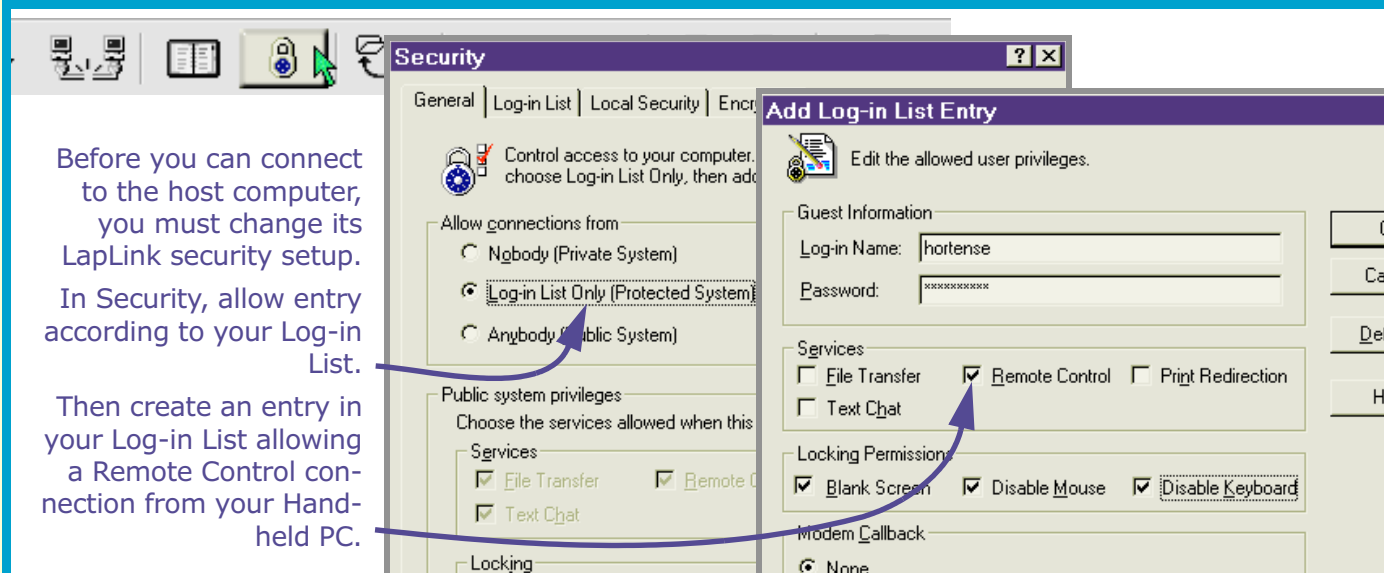
- 3 Follow the instructions that appear on your host Computer's screen.

### To start LapLink CE:

- Double-tap the LapLink CE desktop shortcut on your Windows CE desktop.  
Or tap the Start button, point to Programs, and then tap LapLink CE.

# Preparing the host computer for LapLink CE connections

Before you can connect to the host computer, you must change its LapLink security setup. In Security, allow entry according to your Log-in List. Then create an entry in your Log-in List allowing a Remote Control connection from your Handheld PC.



The screenshot shows the Windows Security dialog box with the 'Log-in List Only (Protected System)' option selected under 'Allow connections from'. The 'Add Log-in List Entry' dialog box is open, showing 'Log-in Name' as 'hortense' and 'Password' as 'XXXXXXXXXX'. Under 'Services', 'Remote Control' is checked. Under 'Locking Permission', 'Disable Keyboard' is checked. Blue arrows point from the text on the left to the 'Log-in List Only' option and the 'Remote Control' checkbox.

The computer that will play host to your Handheld PC must be running one of these versions of LapLink:

- ★ LapLink Technical
- ★ LapLink Professional
- ★ Remote DeskLink
- ★ LapLink for Windows 95 version 7.0 or 7.5
- ★ LapLink for Windows NT version 7.5

For system requirements and installation instructions, see the documentation for the version of LapLink you intend to use.

## Setting up the host computer

Before you begin using LapLink CE, make sure that LapLink on the host computer is set up to accept a connection from your Handheld PC. You can give yourself (or any other LapLink user) access by adding an entry to the LapLink Log-in List.

### To set up a host computer to accept a connection from your Handheld PC:

- 1 In LapLink, click the Security button on the Link-Bar. Or click Security on the Options menu.
- 2 On the General tab, click Log-in List Only.
- 3 On the Log-in List tab, add an entry to give yourself (or another LapLink user) access.

- 4 Specify the log-in name and the password necessary for access.
- 5 Under Services, ensure that the Remote Control box is checked. (The settings for the other services as well as Modem Callback are irrelevant in LapLink CE connections; their boxes may be checked or not.)
- 6 Under Locking, check the appropriate boxes if you want to be able to blank the host computer's screen and lock its keyboard and mouse.
  - ! If security is not an issue, you can open your computer to *any* LapLink user: click the Security button on the LinkBar and then click Anybody (Public System). *Use this option with caution!*

## Connecting to the host computer

You can connect your Handheld PC to the host computer by modem or Remote Networking (TCP/IP). If both computers have a modem, the better choice is Direct Modem. If your host computer does not have a modem but is connected to a network or the Internet, use Remote Networking (TCP/IP).

Before you can connect to the host computer:

- \* Your Handheld PC must be running LapLink CE.
- \* The host computer must be running LapLink (see page 8 for supported versions).
- \* The connection method you use—modem or Remote Networking (TCP/IP), including Internet—must be active and available.
- \* You may need to provide a log-in name and password in order to connect.

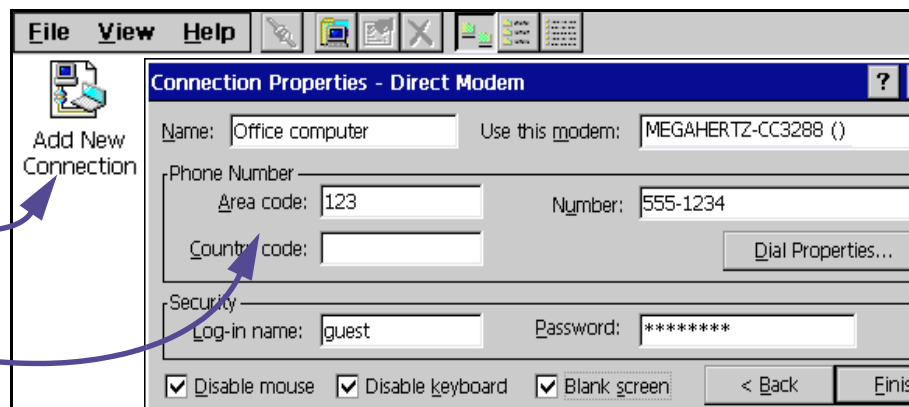
You have two options for connecting:

- \* If you plan to connect to a computer more than once, create a connection and store password, phone number, and other information. Then use the connection to save time when you connect to that computer in the future.
- \* Manually enter password, phone number, and other information when you connect.

# Connecting by Direct Modem

To set up a Direct Modem connection to your host computer, use the Add New Connection tool in LapLink CE and specify Direct Modem.

Then store area code, telephone number, password, and other information for use whenever you connect.



Connecting to another computer by modem is probably the easiest way to connect. Both the host computer and the Handheld PC must be equipped with a modem attached to a phone line, and LapLink must be running on both.

## Setting up a Direct Modem connection

You can simplify the process of opening connections to a host computer by setting up a connection on your Handheld PC first. You do not need to be connected to do this.

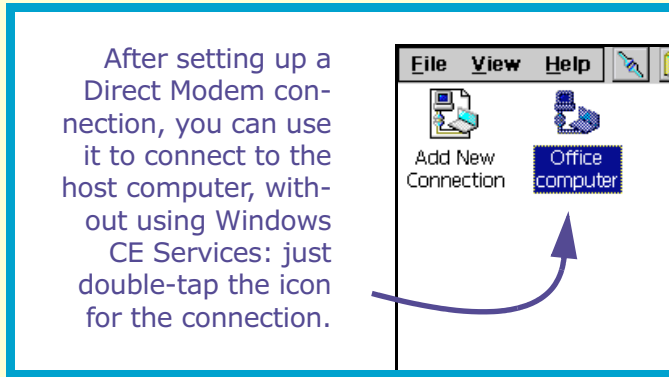
### To set up a Direct Modem connection:

- 1 Double-tap the Add New Connection icon. Tap Direct Modem, and then tap Next.  
Or on the File menu, tap Add New Connection, tap Direct Modem, and then tap Next.
- 2 In the Name box, type a name for the connection.

The name will be used to label the icon in the LapLink window.

- 3 Under Phone Number, type the phone number and other dialing information for the host computer.  
To determine how the number will be dialed (with or without the area code, for example) tap the Dial Properties button.
- 4 If you set up LapLink on the host computer to require that you log in when you connect, type your log-in name and password under Security.
- 5 Specify whether you want to blank the host computer's screen or disable the host computer's mouse or keyboard when you connect by tapping the locking settings: Blank Screen, Disable Mouse, Disable Keyboard.
- 6 Tap Finish.

## Using a Direct Modem connection



### To connect by Direct Modem using a saved connection:

- 1 Start LapLink CE.  
LapLink must be running on the host computer, too.
- 2 Double-tap the connection's icon in the LapLink window. Or tap the connection's icon, and then tap Connect on the File menu.  
Once the connection is made, the contents of the host screen appear on your Handheld PC, in LapLink CE.

✓ If you can't connect, ensure that the host computer is set up to let you connect and that Remote Control is allowed in Security settings on that computer. For more information, see page 8.

### Connecting manually by Direct Modem

You can also connect by modem without setting up a connection first.

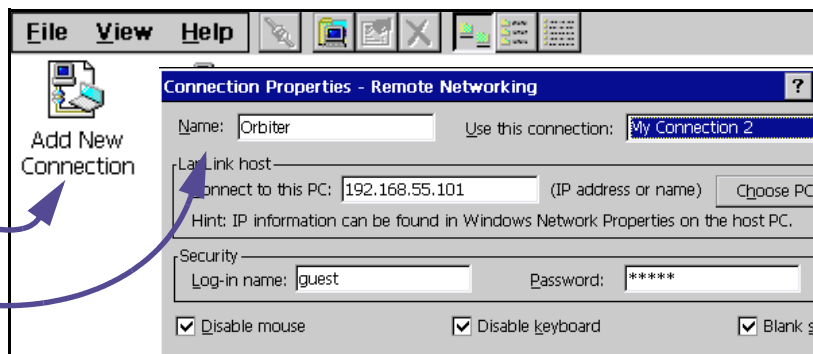
#### To connect manually by direct modem:

- 1 Start LapLink CE.  
LapLink must be running on the host computer, too.
- 2 On the File menu, tap Connect Manually, and then tap Direct Modem.
- 3 Specify settings for dialing the host computer, logging in to the host computer, and locking and blanking the host screen.
- 4 Tap OK to connect.  
If prompted, type your log-in name and password. The connection is made, and the host computer's screen is displayed.

# Connecting by Remote Networking (TCP/IP)

To set up a Remote Networking connection to your host computer, use the Add New Connection tool in LapLink CE and specify Remote Networking.

Then store the remote computer's IP address and other information for use whenever you connect.



If you have Remote Networking (TCP/IP) set up on your Handheld PC, you can use it to dial in to your host computer through your corporate network.

## Setting up a Remote Networking connection

You can simplify the process of opening connections to a host computer by setting up a Remote Networking connection on your Handheld PC first. You do not need to be connected to do this.

### To set up a Remote Networking (TCP/IP) connection:

- 1 Double-tap the Add New Connection icon. Tap Remote Networking (TCP/IP), and then tap Next.  
Or on the File menu, tap Add New Connection. Tap Remote Networking (TCP/IP), and then tap Next.
- 2 In the Name box, type a name for the connection.

This name will be used to label the icon in the LapLink CE window.

- 3 In the Use This Connection list, tap the name of the Remote Networking connection you set up for this connection.

If you have not set up the connection, tap the New button to open Windows CE Remote Networking. Specify connection settings, and then tap OK.

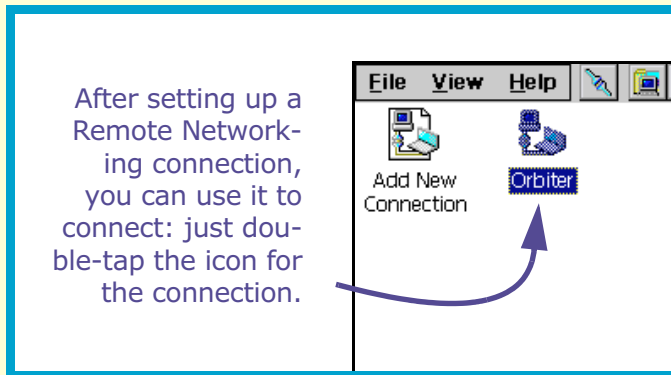
- 4 Type the host computer's IP address in the Connect to This PC box.

✓ You can determine the IP address of the host computer by running LapLink on that computer and opening Port Setup from the Options menu. Click TCP/IP Network in the Ports list, and then click Configure. (Users of LapLink for Windows NT, see Help for your program.)

- 5 Under Security, type the log-in name and the password you must provide in order to gain access to LapLink on the host computer.
- 6 Tap Blank Screen, Disable Mouse, and Disable Keyboard to specify the kind of locking you want to take effect on the host computer when you connect.
- 7 Tap Finish.

An icon with the name that you typed appears in the LapLink window.

### Connecting by Remote Networking using a saved connection



### To connect by Remote Networking (TCP/IP) using a saved connection:

- 1 Start LapLink CE.  
LapLink must be running on the host computer as well.

- 2 Double-tap the connection's icon shown in the LapLink CE window. Or tap the connection's icon, and then tap Connect on the File menu.
- 3 Click the Connect button.  
If prompted, type your log-in name and password. The connection is made, and the host computer's screen is displayed.

✓ If you can't connect, be sure to check that the host computer is set up to let you connect and that Remote Control is allowed in Security settings. For more information, see page 8.

### Connecting manually by Remote Networking (TCP/IP)

You can also connect by Remote Networking without using a saved connection or saving settings for a future connection.

### To connect manually by Remote Networking (TCP/IP):

- 1 Start LapLink CE.  
LapLink must be running on the host computer, too.
- 2 On the File menu, tap Connect Manually, and then tap Remote Networking (TCP/IP).
- 3 Specify settings for connecting, logging in, and locking and blanking the host computer.
- 4 Tap OK to connect.  
If prompted, type your log-in name and password. The connection is made, and the host computer's screen is displayed.

# Setting up Internet connections

For the cost of a connection to a local Internet service provider (ISP), you can connect to your host computer over the Internet from anywhere in the world. All you need to know is the host computer's IP (Internet) address or its WINS server name.

How you make a connection over the Internet depends on how the host computer accesses the Internet:

- ★ If the host computer uses a direct connection from a corporate network, the computer's IP address is probably permanent.
  - ★ If the host computer uses a modem connection to an Internet provider, the computer's IP address is assigned dynamically; that is, it's different each time that the computer connects to the Internet.
- ✓ LapLink connections over the Internet may be prevented if one of the computers is on a private or corporate TCP/IP network behind an Internet firewall. If this occurs, a network administrator should open port 1547 (see the LapLink documentation for the host computer).

## Connecting to a host computer with a temporary Internet address

Traveling Software offers a WINS server as a free service to its registered users. This service matches a Windows computer name to its current Internet address. Once users have configured their computers for the same WINS server, they can locate each other using their WINS names.

## To configure your Handheld PC for the Traveling Software WINS server:

- 1 Tap the Windows CE Start button; tap Programs; tap Communication; and then tap Remote Networking.
- 2 Tap the connection set up for your Internet provider, and then tap Properties on the File menu.
- 3 Tap the TCP/IP Settings button.
- 4 On the Name Servers tab, clear the Server-Assigned Addresses box.
- 5 In the Primary WINS box, type this address: 198.102.198.10
- 6 Tap OK, then tap Next, and then tap Finish.

## Configuring the host computer for the Traveling Software WINS server

Like your Handheld PC, the host computer must also be configured to use the Traveling Software WINS server. For instructions, see the LapLink documentation for the host computer.

In addition, you must determine the Windows computer name on the host so that you can specify it to connect. For instructions, see the LapLink documentation for the host computer.

## Connecting to a host computer over the Internet

### To connect over the Internet:

- 1 Make sure that both the host computer and the Handheld PC are connected to the Internet.

- 2 On the File menu, tap Connect Manually, and then tap Remote Networking (TCP/IP).
- 3 In the Connect to This PC box, type the host computer's IP address.

If you are connecting using the WINS server to a host computer with a temporary Internet

address, type the computer's Windows computer name instead.

- 4 Tap OK.

✓ You can also connect over the Internet using a saved connection. Double-tap the connection's icon shown in the LapLink window. Or tap the connection's icon, and then tap Connect on the File menu.

## Changing your view of the host screen

When you are controlling a full-sized host computer from a Handheld PC, you are usually viewing just part of the host screen at any time. Using various LapLink CE tools, however, you can shift your view to other parts of the screen.

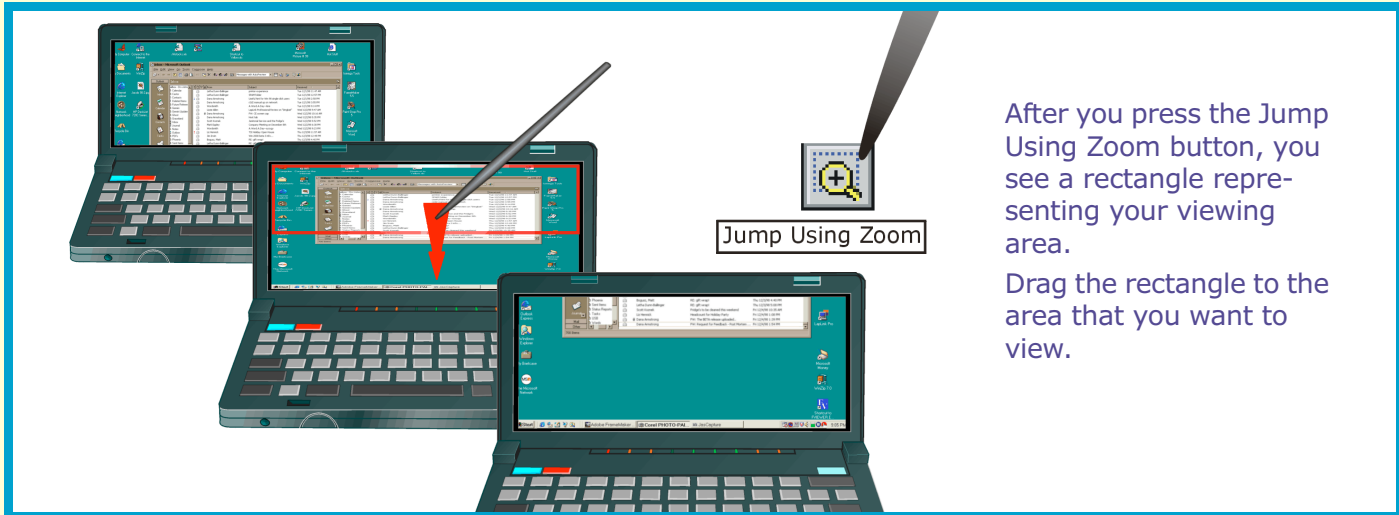
Once the host computer is connected to your Handheld PC, the contents of the host screen appear on the screen of the Handheld PC, within the LapLink CE window. From the Handheld PC, you can then read your e-mail and perform other tasks just as if you were sitting in front of the host computer itself.

Because the screen of your Handheld PC is small, you cannot view the entire host screen at a resolution in which you can work easily. To operate the host computer you will want to change your view of its screen from time to time, as your work requires.

In LapLink CE, you change your view of the host screen in several ways:

- \* Zoom out temporarily to select another view.
- \* Zoom in or out to different magnification levels.
- \* Pan to shift your view.
- \* Scroll vertically or horizontally.
- \* Enlarge the viewing area.
- \* Fit more of the host screen within your view by lowering its resolution as you connect.

## Zooming out to shift your view



Use the Jump Using Zoom tool to view the entire host screen long enough to designate a new area to display on your Handheld PC.

### To shift your view with Jump Using Zoom:

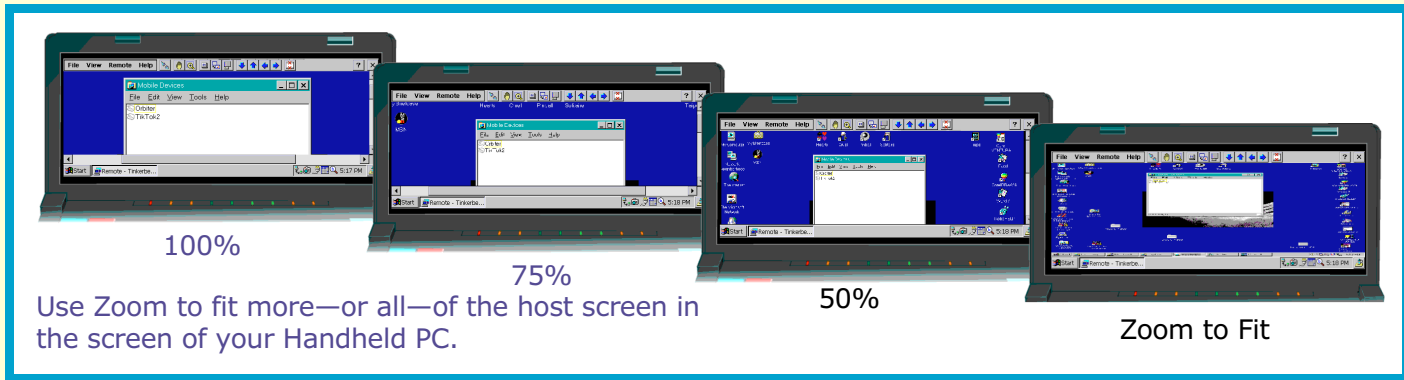
1 Tap the Jump Using Zoom button on the command bar. Or tap Jump Using Zoom on the Remote menu.

The entire host screen now fits in the LapLink window. A rectangle shows the viewable area for your Handheld PC.

2 Drag the rectangle to the area that you want to view, and release the stylus.

LapLink displays only the selected area using the same magnification that you were using before you tapped the Jump Using Zoom button.

# Zooming out to view more of the host screen



By default, the contents of the host screen appear on your Handheld PC screen at 100% magnification.

To include more of the host screen in your view, decrease the magnification using the Zoom tool. Or use the Zoom tool to fit the entire host screen in your view.

Return to 100% magnification when you require a more detailed view.

## To zoom to a different magnification:

- On the View menu, point to Zoom and then tap 75% or 50%.

To return to a detailed view, repeat the procedure, tapping 100% instead.

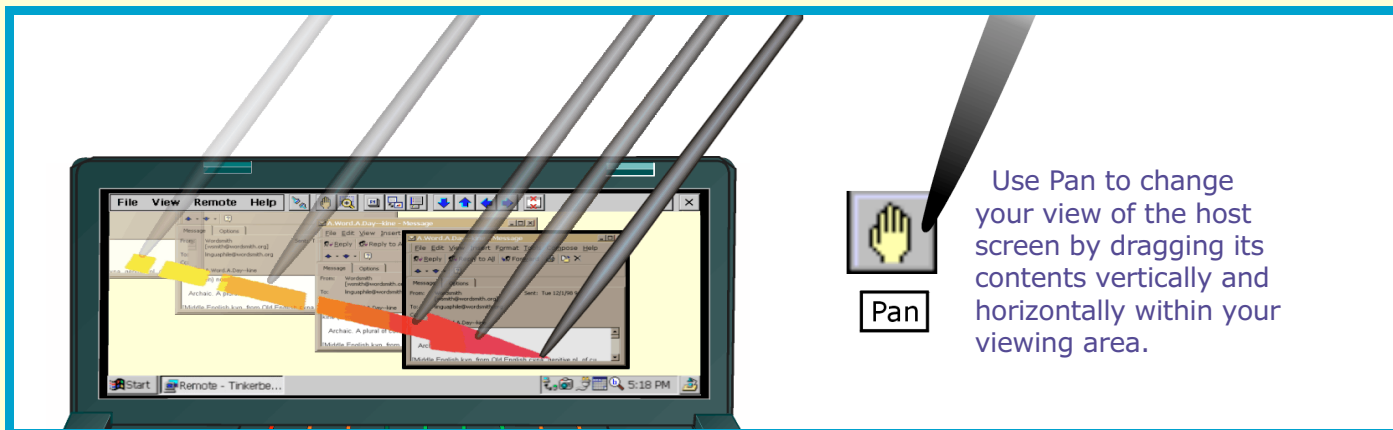
## To fit the entire host screen into your view:

- On the View menu, point to Zoom and then tap Fit to Screen.

Fit to Screen fills your view with a distorted image of the entire host screen.

- ✓ To change the default magnification for future LapLink sessions, click Options on the View menu. On the General tab, click a magnification in the Default Zoom box.

## Panning to a different view



When your view does not encompass all of the host screen, you can shift to a different view using the Pan tool. As long as you are panning, your stylus does nothing but pan.

### To pan to a different view of the host screen:

- 1 Tap the Pan button on the command bar.

Or tap Pan on the Remote menu.

- 2 Drag the stylus to change the view.
- 3 Tap the Pan button on the command bar to turn it off. Or tap Pan on the Remote menu to remove the check mark.

## Scrolling

You can change your view of the host screen using the LapLink CE scroll buttons and bars. Just as you scroll through a document, you can scroll through your image of the host screen by small increments or an entire screenful at a time.

### To scroll segments of the host screen:

- Tap the Scroll Down, Scroll Up, Scroll Left, or Scroll Right button on the command bar. Or on

the Remote menu, tap Move Screen, and then tap Down, Up, Left, or Right.

### To scroll the host screen using the scroll bar:

- Drag the scroll bar to move to the position that you want on the host screen.
  - ✓ If the scroll bars are not visible, tap Hide Scroll Bars on the View menu to remove the check mark.

# Using more of your screen to view the host screen



You can view more of the host screen by hiding the LapLink CE command bar, at the top of your Hand-held PC screen, and the Windows CE taskbar, at the bottom. Scroll bars let you navigate within your viewing area, and a floating Restore button lets you display both bars again.

## To hide the LapLink CE command bar and the Windows CE taskbar:

- Tap the Full Screen button on the command bar. Or on the View menu, tap Full Screen.

Instead of the command bar and taskbar you now see a Restore button. Touching the left side of this button and dragging moves the button to other locations.

- ✓ To display the command bar and the taskbar again, tap the Restore button.

To show more of the host screen you can also:

- ★ **Hide the scroll bars in your LapLink window:** On the View menu, tap Scroll Bars to clear the check mark. (Repeat this procedure to restore the scroll bars.)

- ★ **Hide the Windows CE taskbar:** On the View menu, tap CE Taskbar to clear the check mark. (Repeat this procedure to restore the taskbar.)

## Lowering the resolution of the host screen as you connect

As you connect to the host computer, you can lower the resolution of its screen and thus fit more of its contents into the view from your Handheld PC.

You lower the screen resolution of the host screen by setting up LapLink to open future connections at a resolution of 640 by 480 or 800 by 600. The lower the resolution, the more of the host screen you see on your Handheld PC.

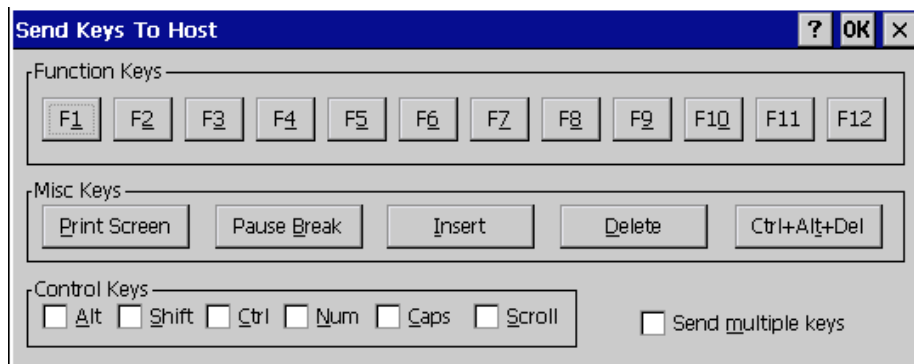
✓ You need to specify a lower resolution just once; the host screen's resolution changes each time you connect. When you close the connection, the original resolution is restored.

### To change the resolution of the host screen for future connections:

- 1 Tap Options on the View menu.
- 2 On the Guest tab, check this box: Change Host Resolution While Connected To.  
Clearing the box will display the host screen at the resolution in effect when you connect.
- 3 Tap either of these options:
  - ★ 640 x 480
  - ★ 800 x 600
- 4 Tap OK.

# Sending function keys and other keys to the host computer

Since the keyboard of your Handheld PC does not include function keys and other keys found on standard keyboards, LapLink lets you "send" these keys to the host computer and have them take effect there. You can also send the keys that reboot the host computer and display its Start menu.



To send keys to the host computer, tap the Send Keys to Host button on the command bar. Then tap a key or a key combination.



Send Keys to Host

While controlling programs on the host computer, you may want to use keys that are not available on your Handheld PC.

In Microsoft Word, for example, you may be used to pressing F7 to spellcheck. Or you may need access to keys that reboot the host computer, print a screen, or toggle the Num Lock key.

To have these and other actions take place on the host computer, use the Send Keys to Host tool.

## To send keys to the host computer:

- 1 Tap the Send Keys to Host button on the command bar. Or tap Send Keys to Host on the Remote menu.
  - 2 Tap a key or a key combination.
- ✓ If you want to keep the Send Keys to Host dialog box open so that you can continue sending keys, check the Send Multiple Keys box. When you are ready to close the dialog box, tap OK.

# Rebooting the host computer

For security purposes, you may want to reboot the host computer when you disconnect. Or you may want to reboot it to put into effect changes you have made.

You can reboot any host computer that has been configured to allow rebooting.

✓ To configure a host computer to be rebooted, change the rebooting option on the Host tab of the Remote Control Options dialog box on that computer.

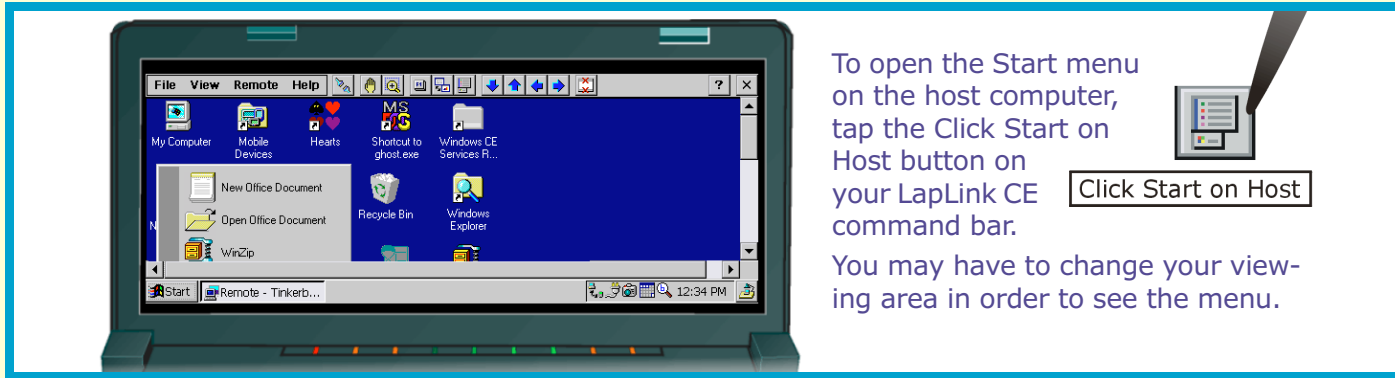
## **To reboot a host computer from your Hand-held PC:**

- Tap Reboot Host on the Remote menu.

**Rebooting a Windows NT host computer** In order to restart Windows NT on a host computer after a reboot, configure the host so that this option is checked: Always Start LapLink before Windows Logon Prompt. (The option is located on the Host or Startup tab of the Remote Control Options dialog box.)

If the host computer is a Windows NT computer, you can log on by tapping the Send Keys to Host button on the command bar, and then tapping Ctrl+Alt+Del. Do not use the Reboot Host command.

# Opening the Start menu on the host computer



To open the Start menu on the host computer, tap the Click Start on Host button on your LapLink CE command bar.

Click Start on Host

You may have to change your viewing area in order to see the menu.

You can always open the Start menu on the host computer even when its Start button is outside of the view from your Handheld PC.

## To open the Start menu on the host computer:

- Tap the Click Start on Host button on the command bar. Or tap Click Start on Host on the Remote menu.

You may have to use Pan or one of the other navigation tools to bring the Start menu into your viewing area.

# Switching between programs on the host computer

## To switch between programs on the host computer from your Handheld PC:

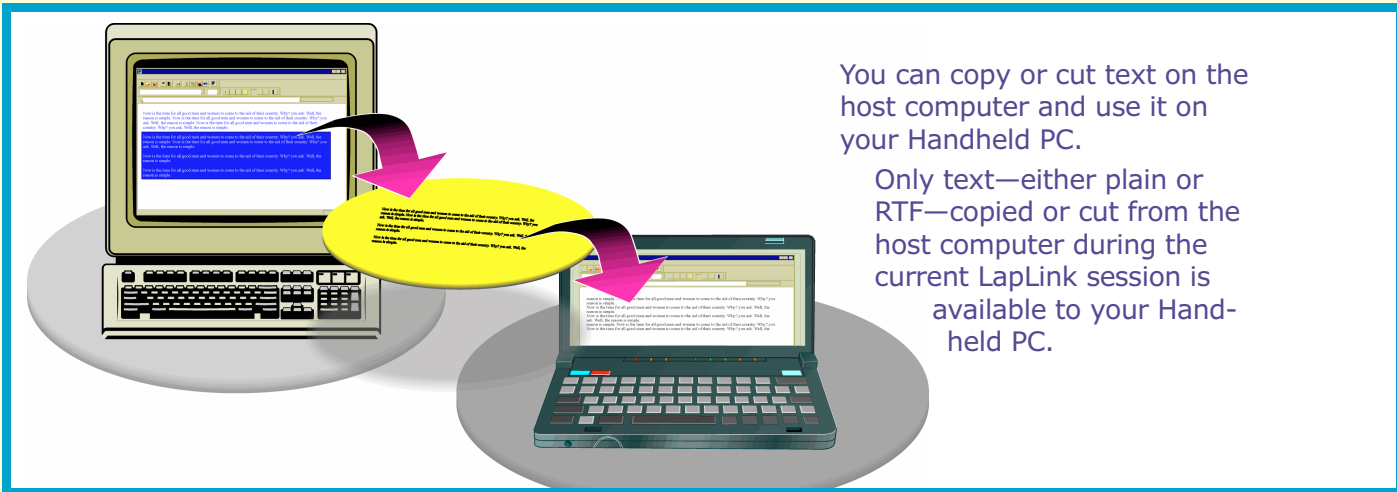
- 1 Tap the Press Alt+Tab on Host button on the command bar. Or tap Press Alt+Tab on Host on the Remote menu.
- 2 Press Tab on the keyboard of your Handheld PC to select the program you want to switch to.

- 3 Tap the Press Alt+Tab on Host button on the command bar again. Or tap Press Alt+Tab on Host on the Remote menu again.

✓ Pressing Alt+Tab on the keyboard of your Handheld PC switches programs on the Handheld PC, not the host computer.

## Copying text from the host computer

You can copy or cut text on the host computer and paste it into a document on your Handheld PC.



You can copy or cut text on the host computer and use it on your Handheld PC.

Only text—either plain or RTF—copied or cut from the host computer during the current LapLink session is available to your Handheld PC.

While you are using your Handheld PC to control a host computer, you can cut or copy text from a document on the host computer and paste it into a document on your Handheld PC.

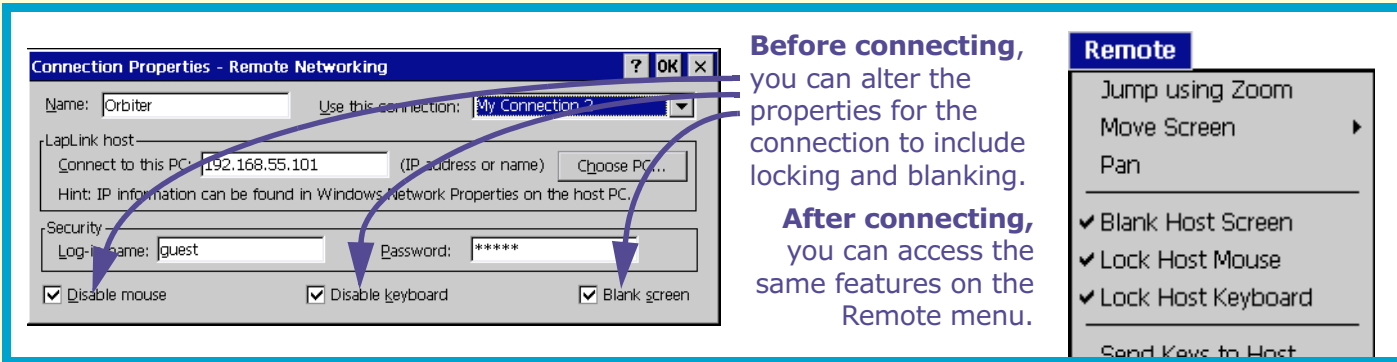
Only text—either plain or RTF—that you cut or copy during the current Remote Control session is available to your Handheld PC. And be sure to paste *before* disconnecting. The text will be lost otherwise.

### **To use text copied or cut on the host computer:**

- 1 Open a LapLink connection to the host computer.
- 2 Copy or cut text from a document on the host computer.
- 3 On your Handheld PC, open the document where you want to paste the text, and use that program's Paste command.

# Ensuring privacy at the host computer

With the permission of the host computer, you can ensure privacy at the host by keeping people from working on that computer and watching as you work.



**Before connecting,** you can alter the properties for the connection to include locking and blanking.

**After connecting,** you can access the same features on the Remote menu.

With the permission of the host computer, you can:

**Disable the host keyboard** Prevents anyone from typing on the host computer's keyboard while you're connected.

**Disable the host mouse** Prevents anyone from using the mouse on the host computer while you're connected.

**Blank the host screen** Blanks the host screen, preventing someone at the host computer from watching what you do while connected. Use either of these methods to lock and blank the host computer:

★ After connecting, tap Blank Host Screen, Lock Host Mouse, or Lock Host Keyboard on the

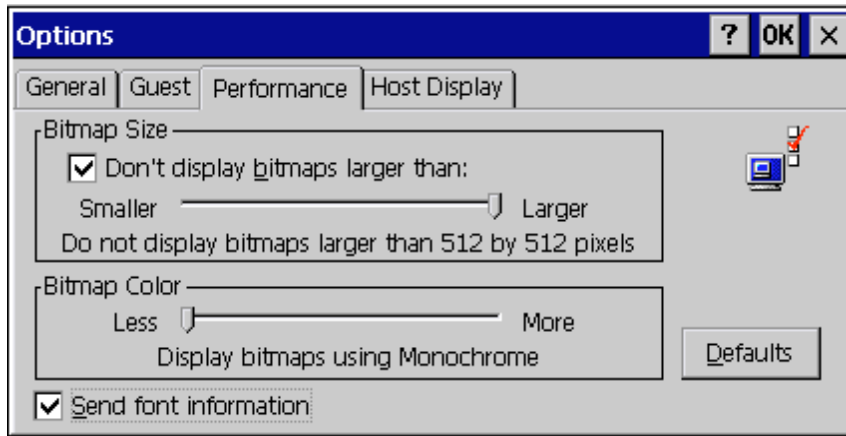
Remote menu. If these options are not available, the host computer may not be set up to allow locking and blanking.

★ Before connecting, tap the icon for the connection. On the File menu, tap Connection Properties and then tap Disable Mouse, Disable Keyboard, and Blank Screen. These settings will be used when you connect to that computer the next time.

✓ To permit locking and blanking on the host computer, change the Locking options in the Security dialog box on the host computer.

# Customizing LapLink CE to improve performance

You can change the quality of your view of the host screen to increase the speed of the connection between the host computer and your Handheld PC.



On the Performance tab of Options, you can customize LapLink CE by trading some visual enhancements for improved performance.

For best performance, show only small bitmap images, view the host screen in monochrome (black and white), and use fonts on your Handheld PC to display text and symbols sent from the host computer.

On the Performance tab of LapLink CE Options, you can speed up connections by decreasing the amount of information transferred to your Handheld PC. These changes affect the display of bitmap images, colors, and characters on your Handheld PC.

✓ You need to make these changes just once; they take effect immediately and remain in effect for future connections.

## To trade certain visual enhancements for faster performance:

- 1 Tap Options on the View menu.
- 2 On the Performance tab, change these options:

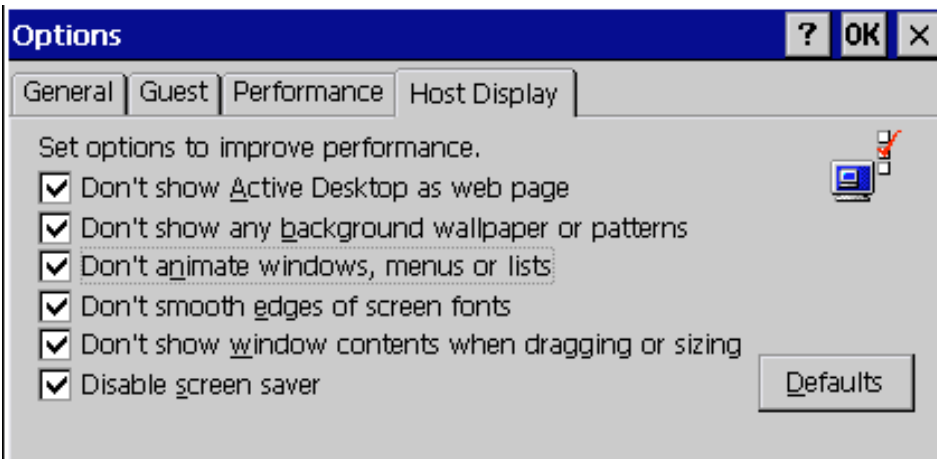
**Don't Display Bitmaps Larger Than . . .** Check this box and drag the slider to specify the smallest allowable bitmap size. For best performance, choose the smallest size (32 by 32 pixels). You

may want to experiment with this setting, increasing the size as necessary. Clear the box when you work in a paint program on the host computer.

**Bitmap Color.** Drag the slider to the left to change your view of the host screen to monochrome (black and white). Return to 16 colors if monochrome is not satisfactory.

**Send Font Information.** Check this box to speed up the display of text and symbols sent from the host computer. Instead of sending images, LapLink then uses fonts on your Hand-held PC to display text and symbols. Clear the box if this substitution is not satisfactory.

3 Tap OK.



The settings on the Host Display tab of Options are preconfigured for best performance. Changing any of them is not recommended unless you want to activate a particular display feature.

# Getting help

Use the LapLink CE online Help system to get answers to your questions. Choose from a list of topics, get details about the items in a dialog box, and identify buttons in the command bar.

The screenshot illustrates three ways to access help in the LapLink CE application:

- Jump Using Zoom:** A callout points to a magnifying glass icon in the command bar.
- Options dialog box:** A callout points to a question mark icon in the title bar of the 'Options' dialog box.
- Help menu:** A callout points to the 'Help' menu item in the application's menu bar.

The 'Options' dialog box shows the 'Host Display' tab with settings for bitmap size and color. The 'Help' window displays the 'LapLink CE Help Contents' and a detailed view of the 'Don't Display Bitmaps Larger Than' option, explaining that it keeps large bitmaps from slowing down the session and provides instructions on how to adjust the slider.

## To open Help topics:

- 1 On the Help menu, tap Help Topics.
- 2 Tap the title of one of the topics.

## To get help while working in a dialog box:

- Click the question mark button in the title bar of the dialog box.

## To identify a button on the command bar:

- 1 Tap the stylus on the button and hold it down. A tooltip appears with a brief identification.
- 2 Drag the stylus off the button before releasing it. The button is not activated.

# Troubleshooting tips

In addition to the troubleshooting tips in this section, you will find more information in LapLink CE Help on your Handheld PC and in LapLink Help on your host computer. For more information about your Handheld PC, see Help for Windows CE Services on your host computer.

## Opening connections

---

- ✓ Make sure that LapLink on the host computer is running and properly configured.

To connect your Handheld PC to a host computer, LapLink must be running on the host. In addition, LapLink must be configured to:

- ★ Allow incoming calls
- ★ Grant permission to use Remote Control
- ★ Disable call waiting

For more information see LapLink Help on the host computer.

---

- ✓ Try out LapLink CE over a direct cable connection to your host computer.

If you are used to connecting your Handheld PC directly to a host computer over a serial cable, try using that connection for a LapLink connection: ❶ In LapLink CE, create a Remote Networking connection, specifying the Windows CE connection you use to connect by cable and the IP address of the host computer. ❷ Open the Windows CE connection. ❸ Open the LapLink connection to control the host computer from your Handheld PC. This procedure will give you a chance to test drive LapLink and ensure that the host computer is responding to connections.

---

- ✓ Make sure that you are supplying the correct log-in name and password.

For Direct Modem and Remote Networking connections, you must supply the log-in name and password required by LapLink on the host computer. In Remote Networking connections, you must also supply another log-in name and password as required by the dial-up server connected to your host computer. (Consult your network administrator if in doubt.)

---

✓ Double-check the telephone number or the IP address.	Before opening a connection, tap its icon, tap Connection Properties on the File menu, and verify that the numbers have been entered accurately. Retype them if necessary.
✓ Try disabling Windows CE Dialing Properties.	If you want to have the modem dial numbers exactly as you type them—without the addition of area codes, outside access numbers, and so on—disable Dialing Properties: Tap the icon for the connection, tap Connection Properties on the File menu, tap the Dial Properties button, and then tap the Dialing Patterns button. In each of the three Dialing Patterns boxes, remove everything but the letter <i>G</i> or <i>g</i> . The modem will now dial numbers just as you type them in the Number box.
✓ Your Handheld PC must have a functioning modem.	For Direct Modem and Remote Networking connections, your Handheld PC must be equipped with a built-in modem, a PC card modem, or an external modem. For Direct Modem connections, make sure that this modem is the one designated for the connection. For more information, see Help for Windows CE Services on your host computer.

## Controlling the host computer

✓ Pan out to check for other activity on the host screen as necessary.	If tapping a button has no effect or typing produces no text, use the Pan tool to determine whether something may have happened, outside your current view, on the host screen. A dialog box may have opened, for example, and nothing else can happen until you close it.
✓ Remember to turn Pan off.	While panning to shift your view of the host screen, you cannot use the stylus for any other purpose. Once you have shifted to a new view, turn Pan off by tapping the Pan button on the command bar again (or tap Pan on the Remote menu to remove the check mark).
✓ Use Send Keys to Host when you are logging on to Windows NT.	When you restart a computer running Windows NT, you must press CTRL+ALT+DELETE to log on to Windows NT. To accomplish this from your Handheld PC, tap the Send Keys to Host button on the command bar (or tap Send Keys to Host on the Remote menu). Then tap the CTRL+ALT+DEL button.

# Index

## A

Add New Connection icon...11, 13

## B

Bitmap Color option...29

Bitmaps

    showing according to size...28

    showing in black and white...29

Blank Host Screen command...27

## C

Click Start on Host command...25

Colors, changing...29

Command bar, hiding...21

Connecting to host computer...10–16

*See also* Direct Modem connections, Internet connections, Remote Networking connections

Copying text from host computer...26

Cutting text from host computer...26

## D

Dial Properties button...11

Direct Modem connections

    requirements for...6

    setting up...11

    using...12

Don't Display Bitmaps Larger Than option...28

## F

Fit to Screen option...19

Fonts, displaying...29

Full Screen command...21

Function keys, activating on host...23

## G

Guest computer

    defined...4

*See also* Handheld PC

## H

Handheld PC

    installing LapLink CE on...7

    requirements for...6

Help

    in dialog boxes...30

    on command bar...30

Hiding command bar and taskbar...21

Host computer

    connecting to...10–16

    copying text from...26

    cutting text from...26

    defined...4

    function keys, activating...23

    IP address of...13

    keyboard, disabling...27

    mouse, disabling...27

    preparing...8

    rebooting...24

    requirements for...6

    screen, blanking...27

    screen, lowering resolution of...22

    Start menu, opening...25

    switching programs on...25

    troubleshooting...31

    viewing screen of...17–22

## I

Installing LapLink CE...7

Internet connections  
    requirements for...6  
    setting up...15  
    using...15

IP address, determining...13

## J

Jump Using Zoom command...18

## K

Keyboard, disabling...27

## L

LapLink CE  
    customizing...28  
    installing...7  
    overview of...4  
    requirements for...6  
    starting...7

Lock Host Keyboard command...27

Lock Host Mouse command...27

## M

Mouse, disabling...27

Move Screen command...20

## P

Pan command...20

Panning...20

Pasting text from host computer to Handheld  
    PC...26

Press Alt+Tab on Host command...25

## R

Reboot Host command...24

Rebooting host computer...24

Remote Networking connections  
    requirements for...6  
    setting up...13  
    using...14

Requirements

    for Handheld PC...6

    for host computer...6

Resolution of host screen, lowering...22

## S

Screen, blanking...27

Scroll buttons...20

Scrolling...20

Send Font Information option...29

Send Keys to Host command...23

Start menu, opening on host...25

Starting LapLink CE...7

## T

Taskbar, hiding...21

TCP/IP connections. *See* Remote Networking  
    connections.

Troubleshooting...31–33

## V

Viewing host screen...17–22

## W

Windows NT host, rebooting...24

## Z

Zoom command...19

Zooming out

    to shift view...18

    to view more...19